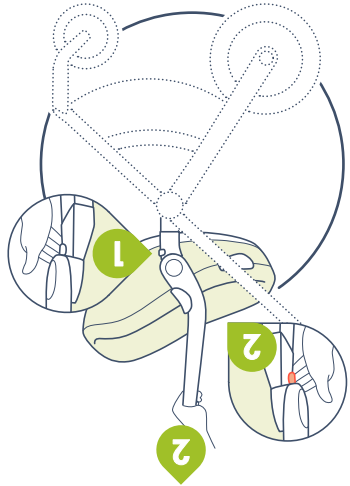


Notice: Make sure the handle is locked in the indicated position when you lift it up.  
 내 카시트를 들 때에는 표시된 위치에서 들어올릴 수 있도록 하세요.



- 1 Push the release button on the right Adapter on the right until you hear a "Click".
- 2 Push and hold the red release button on the left side, and lift the child seat.
- 3 Push and hold the red release button on the right Adapter on the right until you hear a "Click".

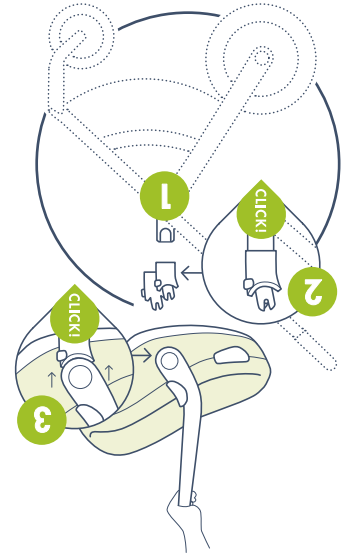
**REMOVING THE CHILD SEAT 카시트 탈착**



Notice: Make sure the handle is locked in the indicated position when you lift it up.  
 내 카시트를 들 때에는 표시된 위치에서 들어올릴 수 있도록 하세요.

- 1 Install the two Maxi-Cosi connectors as instructed in the connectors manual on both sides of the stroller.
- 2 Place the Albert Adapter on top of the connectors until you hear a "Click" on both sides.
- 3 Push the seat onto both adapters until you hear a "Click" on both sides.

**INSTALLING THE CHILD SEAT 카시트 장착**



- Notice: Never leave your child unattended, not even for a short time.  
주의: 짧은 시간이어도 절대 아이를 혼자 두지 마세요.
- Notice: You shouldn't have your child sitting in a car seat for more than two hours at a time. The seat does not replace a cot or a bed.  
주의: 아이가 카시트에 머무르는 시간이 한번에 2시간이 넘지 않도록 주의하세요. 카시트는 침대나 캐리콧이 아닙니다.
- Notice: Always install the child seat facing the driver of the stroller.  
주의: 유모차에 카시트 장착시, 반드시 마주보기 형태로 설치 해야 합니다.
- Notice: Always secure your child with the child seat's harness.  
주의: 항상 안전벨트를 착용 해 주세요.
- Warning: Never lift the child seat when it is mounted on the adapter and the stroller.  
경고: 유모차 어댑터가 손상 되었을 경우 절대 카시트를 스트롤러에 설치하지 마세요.
- Warning: Never place the car seat in the car with the adapters attached.  
경고: 어댑터가 장착 된 상태로 카시트를 차량에 장착하지 마세요.
- Warning: Never park the stroller on an inclined surface. Always park with the break when fitting or removing your child.  
경고: 경사가 진 곳에 유모차를 세워두지 마세요. 아이를 유모차에서 뺀 뒤, 언제나 평평 한 곳에서 브레이크를 걸고 주차 하시기 바랍니다.



**WARRANTY**  
 Our warranty reflects our confidence in the high quality of our design, engineering, production and product performance.  
 The warranty covers all manufacturing and material defects existing at the date of purchase, or appearing within 2 years from the date of receipt from the retailer.  
 This warranty does not cover damages caused by normal wear and tear, negligence, accidents, abuse or a result of failing to comply with the user manual. If you have any questions or concerns about this product or this user manual, please contact us before using the product.  
 We look forward to hearing from you!

**제품의 보증**  
 당사의 2년 보증은 설계, 엔지니어링, 생산 및 제품 성능의 높은 품질에 대한 우리의 자신감을 반영합니다.  
 본 보증은 구매일 또는 2년 이내에 존재하는 모든 제조 및 자재 결함을 다룹니다.  
 본 보증은 정상적인 마모, 파손, 부주의, 사고, 남용 또는 사용 설명서 미준수의 결과로 인한 손해는 보상하지 않습니다.  
 만약 본 제품 또는 사용 설명서에 대해 문의 사항이나 문제가 있는 경우 제품을 사용하기 전 당사에 문의하십시오.  
 우리는 언제나 당신의 연락을 기다립니다.

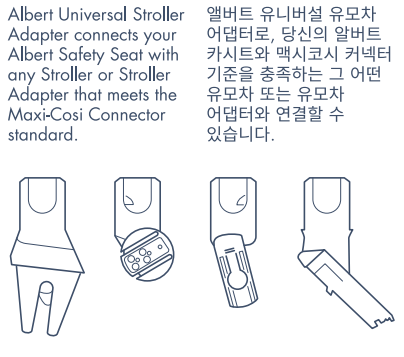
**SWANDOO**  
 Always with you  
 hello@swandoo.com  
 www.swandoo.com  
 All rights reserved © Swandoo GmbH 2021  
 Reiserstrasse 55-57  
 1030 Vienna,  
 Austria  
 Produced in:  
 199 Jinfeng Road, High-tech District,  
 Suzhou City, 215009 Jiangsu, China



**ALBERT Universal Stroller Adapter**

- SUITABLE FOR**  
Swandoo Albert & Albert Lite
- COMPATIBLE WITH / 호환가능**  
Adapters using Maxi-Cosi connector standard

- LEFT ADAPTER 왼쪽 아답터**
- A Hook for child seat
  - B Left release button for child seat in red
  - C Right release button for child seat
  - D Slot for connector
  - E Release hook for connector
- RIGHT ADAPTER 오른쪽 아답터**
- A 어린이 시트 후크
  - B 빨간색 왼쪽 연결해제 버튼
  - C 오른쪽 연결해제 버튼
  - D 커넥터용 슬롯
  - E 커넥터용 후크 해제



Albert Universal Stroller Adapter connects your Albert Safety Seat with any Stroller or Stroller Adapter that meets the Maxi-Cosi Connector standard.  
 앨버트 유니버설 유모차 어댑터로, 당신의 알버트 카시트와 맥시코시 커넥터 기준을 충족하는 그 어떤 유모차 또는 유모차 어댑터와 연결할 수 있습니다.

**주의**  
 안전 사용을 위하여, 라벨을 제거하지 마세요. 모든 라벨을 읽으십시오. 이 제품에는 어린이의 안전을 위한 경고 메시지가 포함되어 있습니다. 이 제품을 사용하기 전에 사용 설명서를 꼭 읽어주세요.  
 Do not remove any labels from the product. They contain important information for the maximum protection and comfort of your child, it is essential that you read through the entire user manual carefully and follow all instructions on how to install and use this product. Also follow the instructions of the stroller's manual and child seat in addition to these instructions. If the car seat adapter interface may present a pinching hazard. Ensure it may result in serious injuries or even death. Keep this manual for future reference.  
 Do not install the adapter and car seat in any other way than shown in this manual.  
**NOTICE**  
 Use only original accessories that were approved by the manufacturer. Do not place a car seat on the stroller/adapter when your child is in the car seat or in the stroller.  
 Only adults should fit or adjust the product. Keep your child away from the stroller as being attached to the handle of the stroller can affect the stability. If in doubt, consult either the manufacturer or the retailer.  
 Do not make any changes to the product whatsoever. This could affect its performance and make it unsafe. Do not use product with damaged or missing parts.  
 Do not use lubricants or aggressive cleaning agents.  
 Do not use the product if there is any evidence of and warm water.  
 Clean the plastic parts with a mild detergent do not know. Do not use the product if there is any evidence of and warm water.  
**MAINTENANCE**  
 Your Swandoo Albert Adapter must undergo regular maintenance. Do not use lubricants or aggressive cleaning agents.  
 Do not use the product if there is any evidence of and warm water.  
 Clean the plastic parts with a mild detergent do not know. Do not use the product if there is any evidence of and warm water.  
**제품의 유지 보수**  
 Albert 어댑터와 카시트를 정기적으로 점검하고 청소하십시오. 이 제품을 사용하기 전에 사용 설명서를 꼭 읽어주세요.  
 Regularly check and clean both sides of the stroller. Place the Albert Adapter on top of the connectors until you hear a "Click" on both sides. Push the seat onto both adapters until you hear a "Click" on both sides.  
**내려**  
 안전을 위한 경고 메시지가 포함되어 있습니다. 이 제품을 사용하기 전에 사용 설명서를 꼭 읽어주세요.  
 For safety, please read the user manual carefully before using the product. The product contains important information for the maximum protection and comfort of your child, it is essential that you read through the entire user manual carefully and follow all instructions on how to install and use this product. Also follow the instructions of the stroller's manual and child seat in addition to these instructions. If the car seat adapter interface may present a pinching hazard. Ensure it may result in serious injuries or even death. Keep this manual for future reference.  
 Do not install the adapter and car seat in any other way than shown in this manual.  
**NOTICE**  
 Use only original accessories that were approved by the manufacturer. Do not place a car seat on the stroller/adapter when your child is in the car seat or in the stroller.  
 Only adults should fit or adjust the product. Keep your child away from the stroller as being attached to the handle of the stroller can affect the stability. If in doubt, consult either the manufacturer or the retailer.  
 Do not make any changes to the product whatsoever. This could affect its performance and make it unsafe. Do not use product with damaged or missing parts.  
 Do not use lubricants or aggressive cleaning agents.  
 Do not use the product if there is any evidence of and warm water.  
 Clean the plastic parts with a mild detergent do not know. Do not use the product if there is any evidence of and warm water.  
**제품의 유지 보수**  
 Albert 어댑터와 카시트를 정기적으로 점검하고 청소하십시오. 이 제품을 사용하기 전에 사용 설명서를 꼭 읽어주세요.  
 Regularly check and clean both sides of the stroller. Place the Albert Adapter on top of the connectors until you hear a "Click" on both sides. Push the seat onto both adapters until you hear a "Click" on both sides.

Do not remove any labels from the product. They contain important information for the maximum protection and comfort of your child, it is essential that you read through the entire user manual carefully and follow all instructions on how to install and use this product. Also follow the instructions of the stroller's manual and child seat in addition to these instructions. If the car seat adapter interface may present a pinching hazard. Ensure it may result in serious injuries or even death. Keep this manual for future reference.  
 Do not install the adapter and car seat in any other way than shown in this manual.  
**NOTICE**  
 Use only original accessories that were approved by the manufacturer. Do not place a car seat on the stroller/adapter when your child is in the car seat or in the stroller.  
 Only adults should fit or adjust the product. Keep your child away from the stroller as being attached to the handle of the stroller can affect the stability. If in doubt, consult either the manufacturer or the retailer.  
 Do not make any changes to the product whatsoever. This could affect its performance and make it unsafe. Do not use product with damaged or missing parts.  
 Do not use lubricants or aggressive cleaning agents.  
 Do not use the product if there is any evidence of and warm water.  
 Clean the plastic parts with a mild detergent do not know. Do not use the product if there is any evidence of and warm water.  
**제품의 유지 보수**  
 Albert 어댑터와 카시트를 정기적으로 점검하고 청소하십시오. 이 제품을 사용하기 전에 사용 설명서를 꼭 읽어주세요.  
 Regularly check and clean both sides of the stroller. Place the Albert Adapter on top of the connectors until you hear a "Click" on both sides. Push the seat onto both adapters until you hear a "Click" on both sides.

# A perfect day in the park



**We recommend**  
Babies below six months should be kept out of the sun, as their skin is too sensitive for sunscreen. For babies older than 6 months apply sunscreen with SPF30+, up to 30 minutes before going out, and re-apply again every 2 hours.

When using Albert, please keep your baby in the shadow and use the sun canopy.

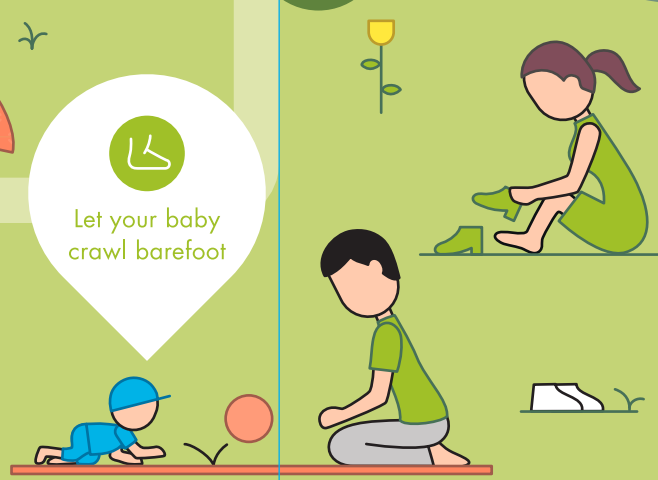
**We recommend**  
6개월 미만의 아기들은 자외선 차단제를 바르기에 너무 약하고 민감하기 때문에 직접적인 햇빛에 노출되지 않도록 합니다. 6개월 이상의 아기들이 30분 이상 썩 외출 할 경우 SPF30+의 자외선 차단제를 바르게 하고, 2시간 마다 다시 발라주도록 합니다.

알버트 카시트를 사용할 경우, 선 캐노피를 사용하여 그늘에서 아기들이 쉴 수 있도록 합니다.

**Don't forget the sun protection**



**Let your baby crawl barefoot**



**Bring water and stay hydrated**

**We recommend**  
Bring a water-resistant playmat or blanket that your baby can use for crawling, sitting and playing.

방수매트나 담요를 가지고가서 아기들이 자유롭게 기거나 앉거나 놀 수 있도록 합니다.

**Soap bubbles are great fun**



**We recommend**  
For extra fun and really good pictures, pack some soap bubbles. Babies love them!

아기와 더욱 재미있는 시간을 보내고 더 멋진 사진을 남기기 위해 비누방울을 가지고 나가는데 어떨까요? 아기들이 너무 좋아할 거예요!



**We recommend**  
Choose nice clothes that are comfortable and appropriate for active play. Soft organic cotton is easy to wash, is breathable, and helps kids to stay cool during hot days.

야외 활동 시 갈아입을 만한 옷들을 항상 가지고 다니도록 합니다. 부드러운 오가닉 원단의 옷은 세탁이 용이하고 통기성이 좋으며, 뜨거운 날씨에도 아기가 시원하게 생활 할 수 있도록 도와줍니다.

**Keep mosquitos and bugs away**



**We recommend**  
When your baby takes a nap, use Albert with a mosquito net.

Start using insect repellents after the age of two months; make sure to cover clothing and exposed skin. Do not combine repellent with sunscreen.

**We recommend**  
아기들이 곤한 낮잠에 빠져있을 때는, 모기장을 사용 해 주세요.

생후 두달 이 된 아기들에게는 옷이나 피부를 보호하기 위하여 안티버그 용품을 사용하도록 합니다. 안티버그 용품과 자외선 차단제를 섞어서 사용하지 않도록 합니다.

**We recommend**  
A baby under six months doesn't need any extra water. The hydration from breast milk or formula is enough. After that, babies can sip between 60 and 240 ml of water, especially during hot, and humid days.

생후 6개월이 안 된 아기들은 수분 보충이 필요하지 않을 수 있습니다.

모유나 분유를 통한 수분 섭취가 충분하기 때문이죠.

그 시기가 지난 뒤, 특히 습하거나 뜨거운 계절에는 약 60ml 에서 240ml 의 물을 섭취 할 수 있도록 합니다.

**Bring clothes to change**



This infographic is for educational purposes only. It is not intended to be a substitute for informed medical advice or care. Please consult your pediatrician or family doctor.

이 인포그래픽은 교육용 으로부터 제공됩니다. 이것은 정보에 입각한 의료 조언이나 치료를 대체하기 위한 것은 아닙니다. 전문가의 조언이 필요할 경우 의사나 약사와 상의 하세요.